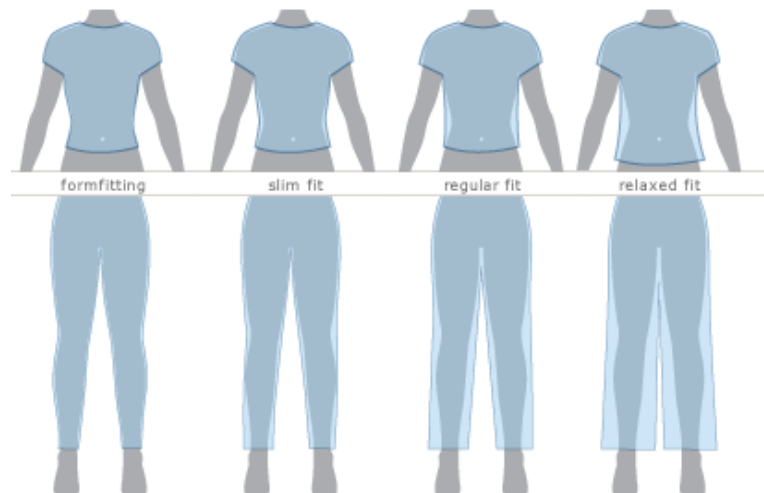


Women's Sizing Information

	X-Small	Small	Medium	Large	X-Large
Chest (cm.)	81-84	86-89	91-94	98-102	105
Chest (ins.)	32-33	34-35	36-37	38 1/2-40	41 1/2
Waist (cm.)	61-64	66-69	71-74	77-81	85
Waist (ins.)	24-25	26-27	28-29	30 1/2-32	33 1/2
Hip (cm.)	88-90	93-95	98-100	104-108	112
Hip (ins.)	34 1/2-35 1/2	36 1/2-37 1/2	38 1/2-39 1/2	41-42 1/2	44
Inseam* (cm.)	76-79	79-81	79-81	79-81	79-81
Inseam* (ins.)	30-31	31-32	31-32	31-32	31-32

Measurements refer to body size, not garment dimensions, and are in inches, unless otherwise noted.

* Inseam will vary depending on style; when lengths are offered, "regular" is 32 and "long" is 34, unless otherwise noted.



Formfitting: Conforms to the body's contours.

Slim Fit: Closer-fitting. Slim-fitting technical garments may be worn over baselayers and light midlayers.

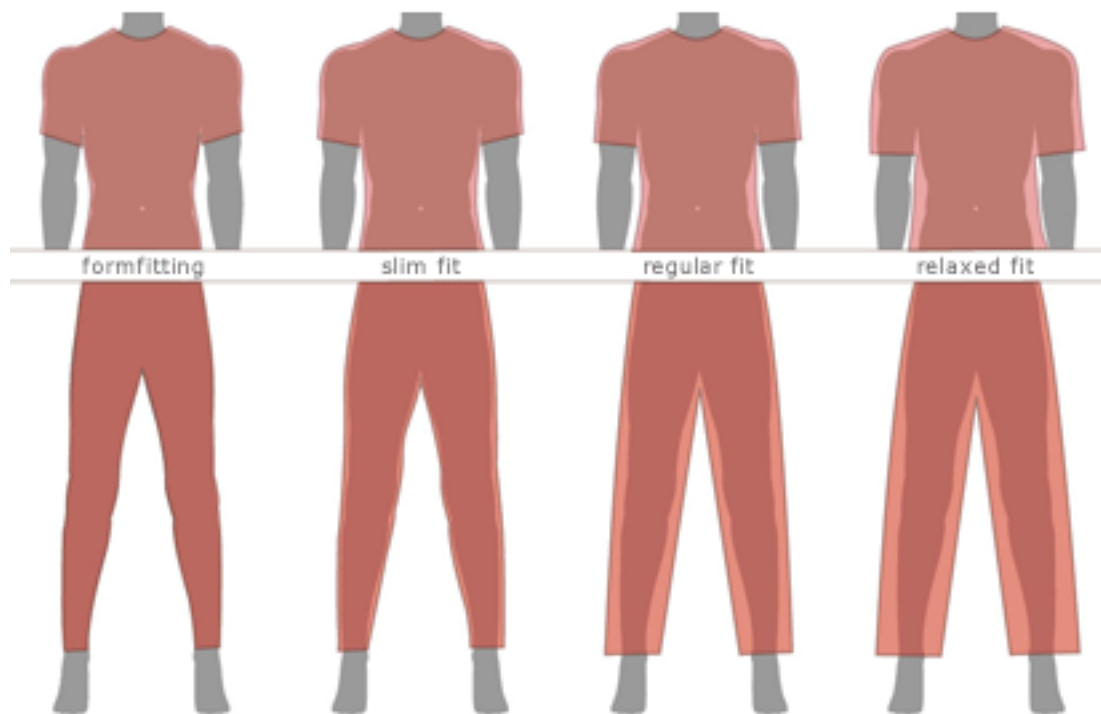
Regular Fit: Neither slim nor oversized. Regular-fitting technical garments may be worn over heavier midlayers.

Relaxed Fit: Drapes loosely on the body.

Men's Sizing Information

	X-Small	Small	Medium	Large	X-Large	XX-Large
Chest (cm.)	86-89	91-97	99-104	107-114	117-122	124-130
Chest (ins.)	34-35	36-38	39-41	42-45	46-48	49-51
Neck (cm.)	37-38	38-39	39-41	42-43	43-44	44-46
Neck (ins.)	14-14 1/2	15-15 1/2	15 1/2-16	16 1/2-17	17-17 1/2	17 1/2-18
Sleeve (cm.)	79-81	83-85	86-89	89-91	91-94	94-97
Sleeve (ins.)	31-32	32 1/2-33 1/2	34-35	35-36	36-37	37-38
Waist (cm.)	71	74-76	79-84	86-91	97	102-107
Waist (ins.)	28	29-30	31-33	34-36	38	40-42
Inseam* (cm.)	76-79	76-79	81-84	81-84	81-84	81-84
Inseam* (ins.)	30-31	30-31	32-33	32-33	32-33	32-33
Women's Size Conversion	4-6	8-10	12-14	14-16	-	-

Measurements refer to body size, not garment dimensions, and are in inches, unless otherwise noted. * Inseam will vary depending on style; when lengths are offered, "regular" is 32 and "long" is 34, unless otherwise noted.



Men's Fit Guide

Formfitting: Conforms to the body's contours.

Slim Fit: Closer-fitting. Slim-fitting technical garments may be worn over baselayers and light midlayers.

Regular Fit: Neither slim nor oversized. Regular-fitting technical garments may be worn over heavier midlayers. Men's regular fit pants have a slimmer fit through that thigh, lower leg, and cuff.

Relaxed Fit: Drapes loosely on the body. Men's relaxed fit pants have a bit of extra room through the hip, thigh, lower, and cuff.